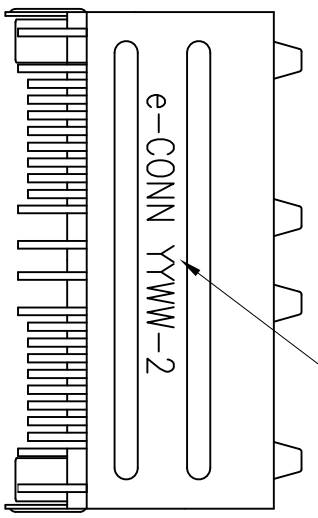
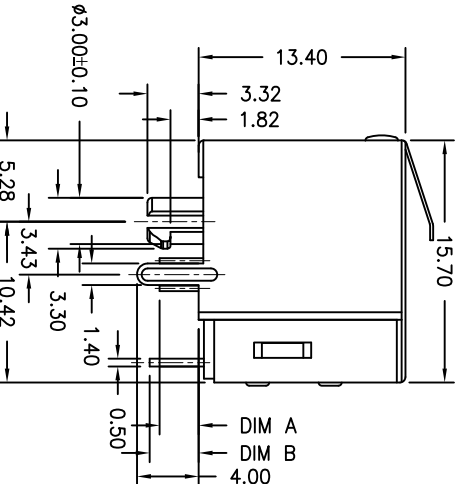
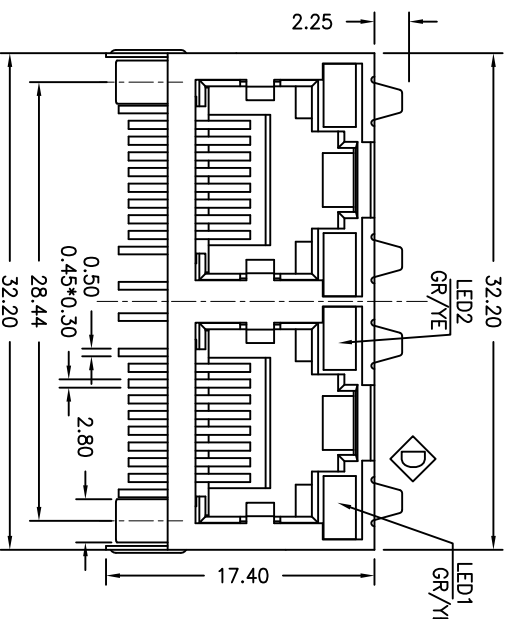


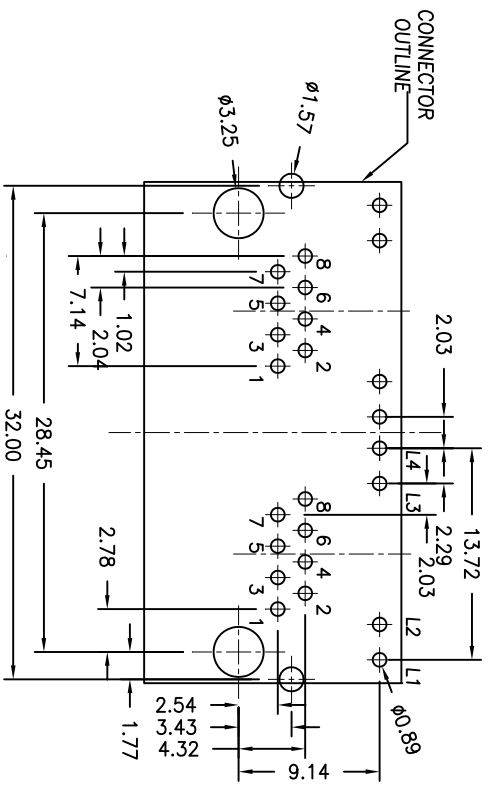
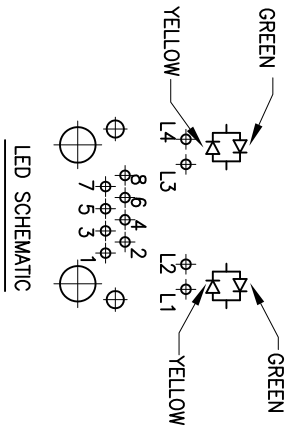
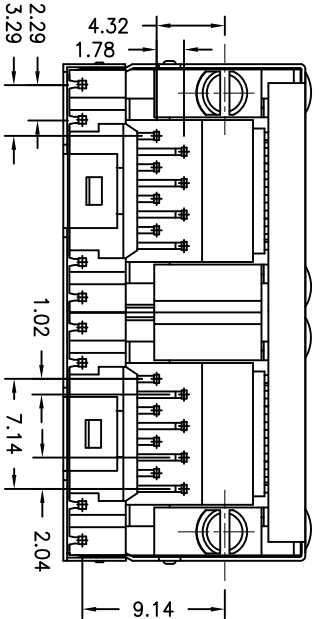
NOTES:
 1. MATERIAL: HOUSING: HIGH TEMP. THERMOPLASTIC, UL 94V 0, BLACK.
 CONTACT: PHOSPHOR BRONZE, T=0.30mm, 50u" NICKEL UNDERPLATE ON ALL AREA, 100u" TIN TERMINATION END, GOLD 3u" ON CONTACT AREA
 SHELL: T=0.20mm COPPER ZINC ALLOY PLATED WITH NICKEL
 2. OPERATING TEMPERATURE: -40C ~ +85C
 3. JACK CAVITY CONFORMS TO FCC RULES AND REGULATIONS PART 68, SUBPART F

A	Left LED#2	Right LED#1
	L4+ L3- L4- L3+	L2+ L1- L2- L1+
	GR YE	GR YE

CODE	Contact PIN DIM A	LED PIN DIM B
1	2.54	3.18



LOGO, 周期代碼



REV.	ECN. NO.	DRAWN	DATE	EC.content
A	EN1402012	LUBAO	02/28/2014	
C	EN1507007	Xingjian	07/24/2015	更新圖面與實物相符



⊙:QUALITY CONTROL ITEM	GENERAL TOLERANCE	PART NO.:	JT2-C51A-2100
APPROVED	X±0.38 X.±2°	TITLE:	RJ45 CONNECTOR JT 1*2 PORT
CHECKED	.XX±0.25 .X±1°	W/	LED, 8P8C, Shielded
DRAWN	.XXX±0.13	SCALE:	1:1
	UNIT: mm	SHEET:	1/1
		REV.:	D